

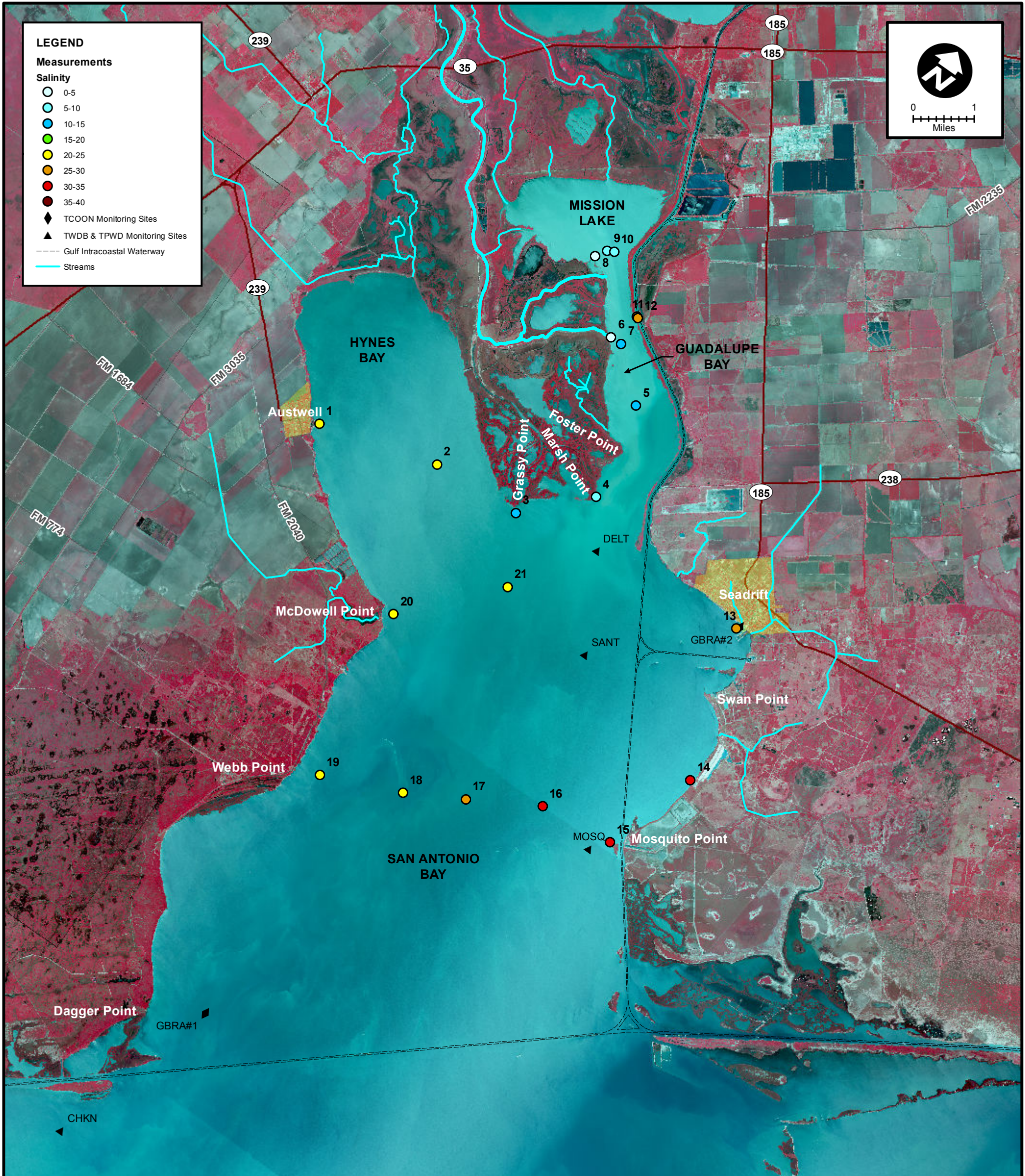
LEGEND

Measurements

Salinity

- 0-5
- 5-10
- 10-15
- 15-20
- 20-25
- 25-30
- 30-35
- 35-40

- ◆ TCOON Monitoring Sites
- ▲ TWDB & TPWD Monitoring Sites
- Gulf Intracoastal Waterway
- Streams



MEAS NO.	SITE DESCRIPTION	LATITUDE (N)	LONGITUDE (W)	TIME	TEMP (°C)	pH	DO (mg/L)	SC (µs)	SALINITY (PSU)	NOTES
1	Hynes Bay Austwell Pier	28 23 29.6	96 50 12.3	10:36	15.1	8.0	8.8	34,230	21.55	
2	Hynes Bay between Austwell Pier & Grassy Point	28 23 57.0	96 48 15.4	10:55	17.7	8.1	8.0	38,240	24.35	
3	SA Bay near Grassy Point at Shellfish Marker No. 2	28 24 00.0	96 46 45.7	11:03	16.7	8.3	9.8	22,970	13.96	
4	SA Bay @ Marsh Point	28 24 50.0	96 45 49.6	11:12	15.8	8.3	9.6	15,600	9.16	
5	Guadalupe Bay @ Pipe No. 2	28 26 14.2	96 46 6.8	11:23	17.8	8.2	9.1	23,520	14.26	
6	Guadalupe Bay @ South Fork	28 26 51.1	96 47 4.1	11:32	18.6	8.2	8.2	2,490	1.27	
7	Guadalupe Bay @ Pipe No. 3 near South Fork	28 26 51.1	96 46 52.3	11:36	17.6	8.2	9.3	18,400	10.93	
8	Guadalupe Bay @ Mission Lake Sonde	28 27 41.1	96 48 0.8	11:55	17.8	8.2	9.2	6,259	2.71	
9	Mission Lake Mouth	28 27 50.6	96 47 54.2	12:03	17.5	8.4	9.9	16,300	9.59	S. side of turbidity line in water
10	Mission Lake Mouth	28 27 53.4	96 47 47.7	12:07	17.5	8.3	10.0	14,650	8.55	N. side of turbidity line in water
11	Barge Canal just above Cut	28 27 18.1	96 46 54.2	12:13	19.4	8.0	7.7	42,750	27.68	
12	Barge Canal @ Cut	28 27 17.4	96 46 52.8	12:16	19.3	8.0	7.8	42,950	27.73	
13	SA Bay @ Seadrift	28 24 23.3	96 42 45.3	12:36	18.2	8.1	8.6	44,900	29.11	
14	SA Bay @ SABF Lodge Boat Dock	28 22 13.4	96 42 0.2	12:48	18.3	8.0	8.2	47,240	30.79	
15	SA Bay @ Mosquito Point	28 20 50.4	96 42 31.4	13:18	18.6	8.1	8.2	49,190	32.22	
16	SA Bay between Mosquito & Webb (1/4 across)	28 20 44.0	96 43 45.1	13:30	18.8	8.1	8.4	46,380	30.18	
17	SA Bay between Mosquito & Webb (1/2 across)	28 20 12.0	96 44 50.9	13:38	19.5	8.1	8.7	44,460	28.78	
18	SA Bay between Mosquito & Webb (3/4 across)	28 19 46.6	96 45 45.1	13:45	19.2	8.2	8.6	38,890	24.82	
19	SA Bay @ Webb Point	28 19 19.7	96 47 1.7	13:51	17.7	8.2	7.8	38,070	24.29	
20	SA Bay @ McDowell Point	28 21 49.5	96 47 29.4	14:05	17.3	8.2	9.1	34,330	21.96	
21	Hynes Bay between McDowell Point & Austwell Pier	28 23 3.5	96 46 12.2	14:16	18.3	8.2	8.8	33,650	21.14	



SALINITY MEASUREMENT DATA
SAN ANTONIO BAY

DATE:	4/11/2013
FIELD CREW:	DA, CH, LG, PC
AVG. DAILY FLOW AT USGS TIVOLI GAUGE:	847 CFS