

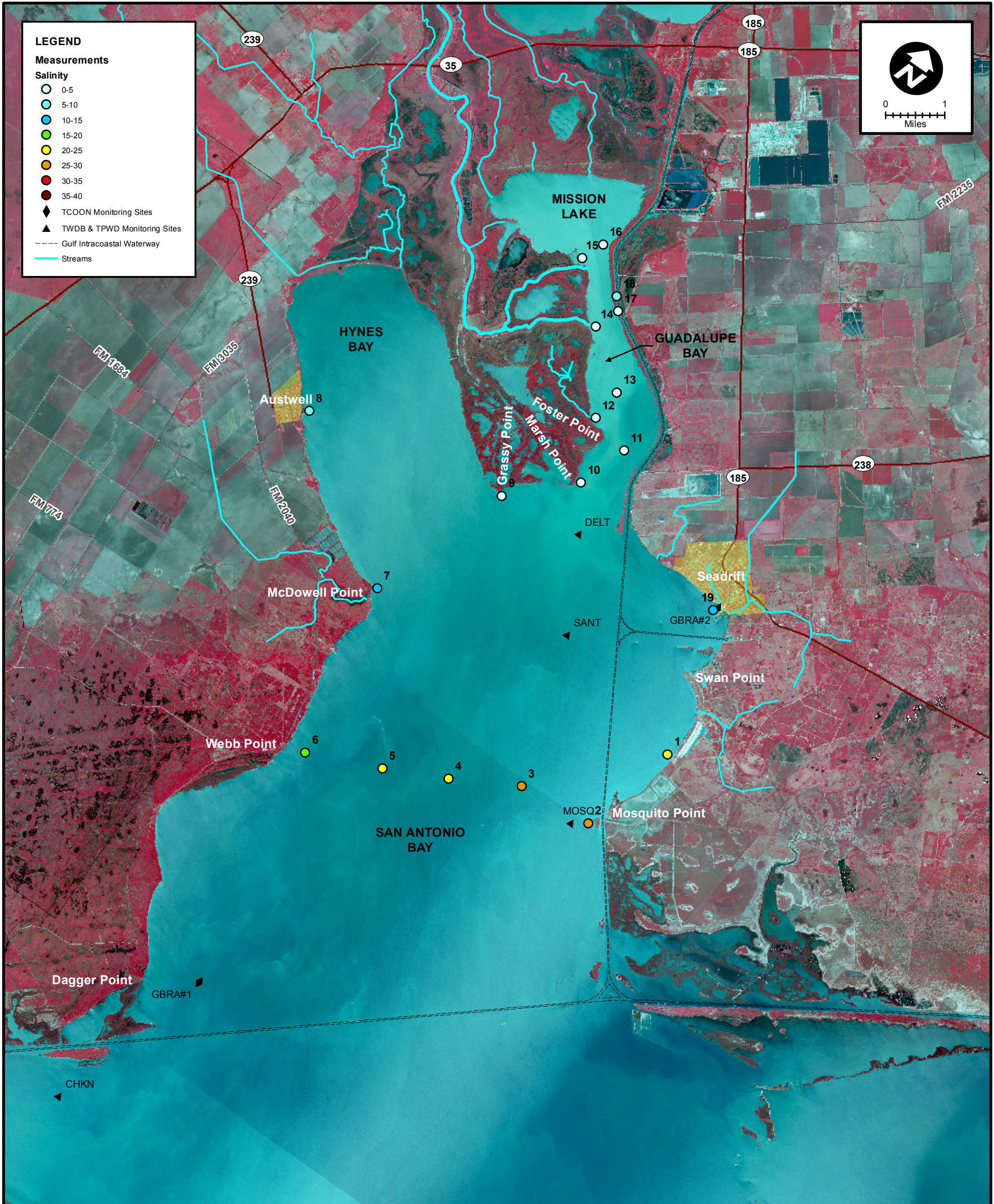
**LEGEND**

**Measurements**

**Salinity**

- 0-5
- 5-10
- 10-15
- 15-20
- 20-25
- 25-30
- 30-35
- 35-40

- ◆ TCOON Monitoring Sites
- ▲ TWDB & TPWD Monitoring Sites
- Gulf Intracoastal Waterway
- Streams



MEAS NO.	SITE DESCRIPTION	LATITUDE (N)	LONGITUDE (W)	TIME	TEMP (°C)	pH	DO (mg/L)	SC (µs)	SALINITY (PSU)	NOTES
1	SA Bay @ Falcon Point (SABF Lodge)	28 22 13.8	96 42 2.8	9:37	28.9	8.0	5.0	32,131	20.64	Calm seas, 11.7 mph NE Wind
2	SA Bay @ Mosquito Point	28 20 43.8	96 42 30.4	9:56	28.6	7.9	5.8	43,954	28.24	
3	SA Bay Mosquito Point to Webb Point (1/4 across)	28 20 38.5	96 43 46.6	11:33	29.1	8.2	6.5	40,456	25.75	
4	SA Bay Mosquito Point to Webb Point (midpoint)	28 20 7.8	96 44 51.6	11:40	29.3	8.2	6.9	36,803	23.18	
5	SA Bay Mosquito Point to Webb Point (3/4 across)	28 19 42.7	96 45 52.2	11:50	29.5	8.3	6.9	37,395	23.58	
6	SA Bay at Webb Point	28 19 16.2	96 47 5.0	14:13	30.5	8.3	7.6	27,762	16.97	
7	SA Bay at McDowell Point	28 21 52.7	96 47 37.1	14:25	30.4	8.5	8.5	20,357	12.06	
8	Hynes Bay at Austwell Pier	28 23 29.4	96 50 12.8	14:58	31.5	8.3	6.9	14,574	8.40	
9	SA Bay at Grassy Point (Shellfish Marker No. 2)	28 24 2.0	96 46 45.2	15:15	30.8	8.6	7.0	7,741	4.20	
10	SA Bay at Marsh Point	28 24 50.9	96 45 46.8	15:22	30.5	8.4	9.1	4,450	2.64	
11	Guadalupe Bay at Pipe No. 1	28 25 35.8	96 45 28.8	15:29	30.9	8.3	8.6	3,466	1.81	approx depth 4.8'
12	Guadalupe Bay at Redfish Bayou	28 25 45.7	96 46 10.6	15:34	31.0	8.7	6.8	981	0.49	
13	Guadalupe Bay at Pipe No. 2	28 26 14.7	96 46 7.2	15:40	30.9	8.4	6.9	1,257	0.62	approx depth 3.5'
14	Guadalupe Bay at South Fork	28 26 52.9	96 47 1.4	15:46	31.3	8.3	8.5	915	0.45	
15	Guadalupe Bay at Mission Lake Sonde	28 27 36.5	96 47 51.4	16:07	31.0	8.0	7.3	571	0.27	
16	Guadalupe Bay at Mission Lake Mouth	28 27 56.8	96 47 41.4	16:11	30.8	8.3	6.9	554	0.26	
17	Guadalupe Bay at Hurricane Pass	28 27 15.1	96 46 51.6	16:17	30.4	7.9	6.6	8,299	4.00	
18	Barge Canal North of Hurricane Pass	28 27 25.6	96 47 1.2	16:20	31.3	7.7	5.3	14,650	8.60	
19	SA Bay at Seadrift	28 24 22.5	96 42 45.4	16:38	30.6	8.6	6.8	22,409	13.40	



**SALINITY MEASUREMENT DATA**  
SAN ANTONIO BAY

DATE:	6/07/2013
FIELD CREW:	DA, CH
AVG. DAILY FLOW AT USGS TIVOLI GAUGE:	1,830 CFS