

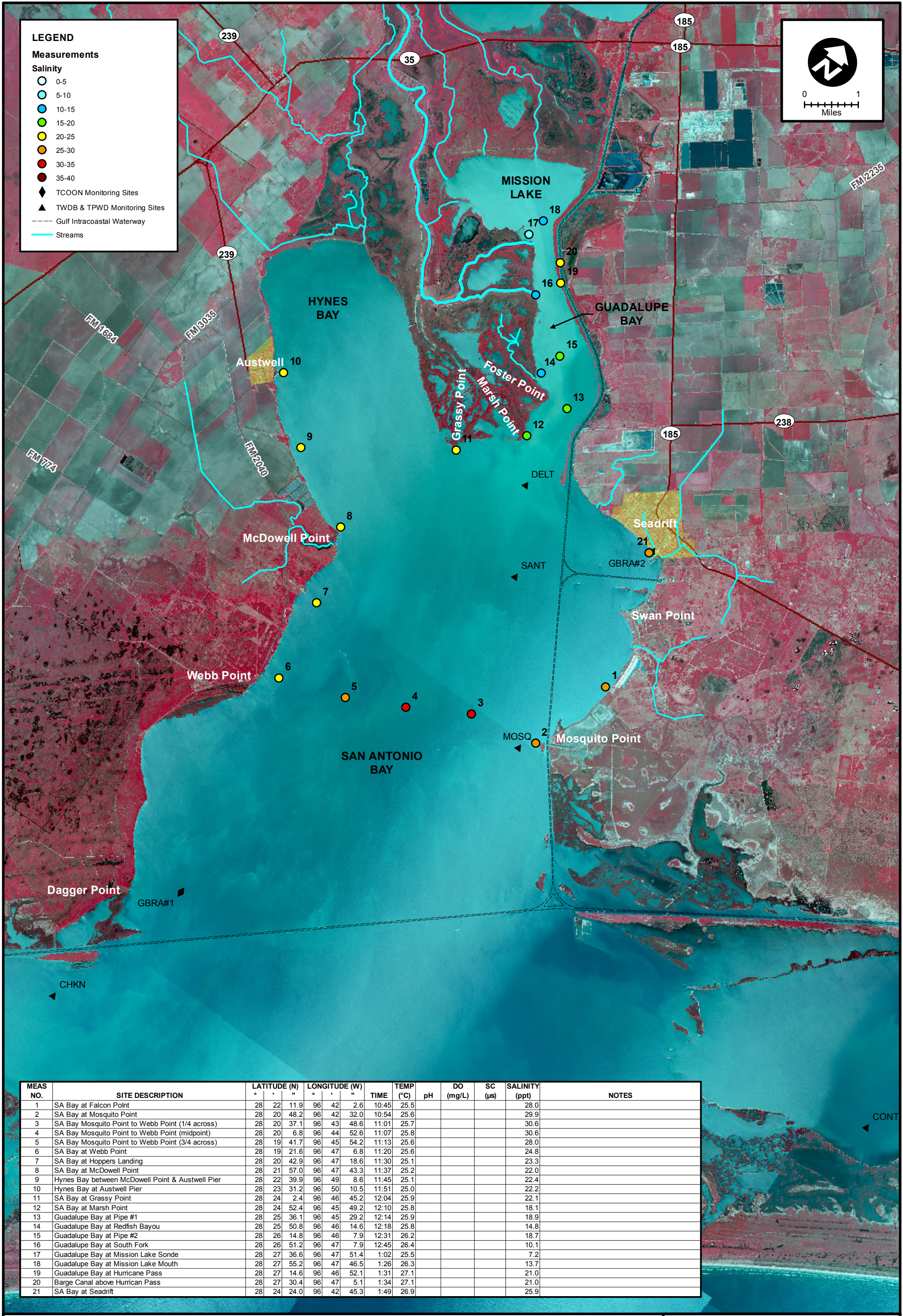
LEGEND

Measurements

Salinity

- 0-5
- 5-10
- 10-15
- 15-20
- 20-25
- 25-30
- 30-35
- 35-40

- ◆ TCOON Monitoring Sites
- ▲ TWDB & TPWD Monitoring Sites
- Gulf Intracoastal Waterway
- Streams



MEAS NO.	SITE DESCRIPTION	LATITUDE (N)	LONGITUDE (W)	TIME	TEMP (°C)	pH	DO (mg/L)	SC (µs)	SALINITY (ppt)	NOTES
1	SA Bay at Falcon Point	28 22 11.9	96 42 2.6	10:45	25.5				28.0	
2	SA Bay at Mosquito Point	28 20 48.2	96 42 32.0	10:54	25.6				29.9	
3	SA Bay Mosquito Point to Webb Point (1/4 across)	28 20 37.1	96 43 48.6	11:01	25.7				30.6	
4	SA Bay Mosquito Point to Webb Point (midpoint)	28 20 6.8	96 44 52.6	11:07	25.8				30.6	
5	SA Bay Mosquito Point to Webb Point (3/4 across)	28 19 41.7	96 45 54.2	11:13	25.6				28.0	
6	SA Bay at Webb Point	28 19 21.6	96 47 6.8	11:20	25.6				24.8	
7	SA Bay at Hoppers Landing	28 20 42.9	96 47 18.6	11:30	25.1				23.3	
8	SA Bay at McDowell Point	28 21 57.0	96 47 43.3	11:37	25.2				22.0	
9	Hynes Bay between McDowell Point & Austwell Pier	28 22 39.9	96 49 8.6	11:45	25.1				22.4	
10	Hynes Bay at Austwell Pier	28 23 31.2	96 50 10.5	11:51	25.0				22.2	
11	SA Bay at Grassy Point	28 24 2.4	96 46 45.2	12:04	25.9				22.1	
12	SA Bay at Marsh Point	28 24 52.4	96 45 49.2	12:10	25.8				18.1	
13	Guadalupe Bay at Pipe #1	28 25 36.1	96 45 29.2	12:14	25.9				18.9	
14	Guadalupe Bay at Redfish Bayou	28 25 50.8	96 46 14.6	12:18	25.8				14.8	
15	Guadalupe Bay at Pipe #2	28 26 14.8	96 46 7.9	12:31	26.2				18.7	
16	Guadalupe Bay at South Fork	28 26 51.2	96 47 7.9	12:45	26.4				10.1	
17	Guadalupe Bay at Mission Lake Sonde	28 27 36.6	96 47 51.4	1:02	25.5				7.2	
18	Guadalupe Bay at Mission Lake Mouth	28 27 55.2	96 47 46.5	1:26	26.3				13.7	
19	Guadalupe Bay at Hurricane Pass	28 27 14.6	96 46 52.1	1:31	27.1				21.0	
20	Barge Canal above Hurrican Pass	28 27 30.4	96 47 5.1	1:34	27.1				21.0	
21	SA Bay at Seadrift	28 24 24.0	96 42 45.3	1:49	26.9				25.9	



SALINITY MEASUREMENT DATA
SAN ANTONIO BAY

DATE:	9/23/2013
FIELD CREW:	DA, CH, JC
AVG. DAILY FLOW AT USGS TIVOLI GAUGE:	685 CFS