

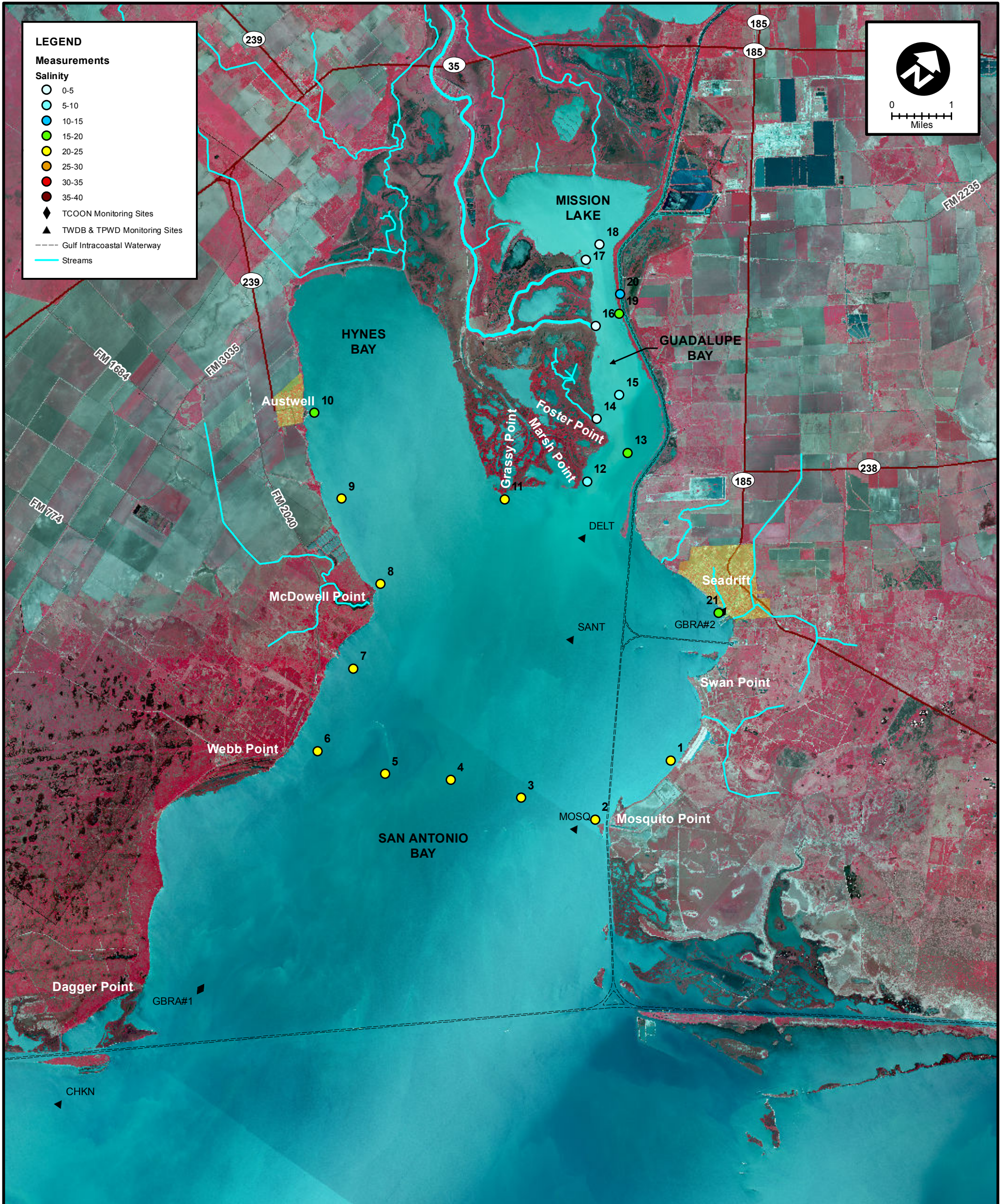
**LEGEND**

**Measurements**

**Salinity**

- 0-5
- 5-10
- 10-15
- 15-20
- 20-25
- 25-30
- 30-35
- 35-40

- ◆ TCOON Monitoring Sites
- ▲ TWDB & TPWD Monitoring Sites
- Gulf Intracoastal Waterway
- Streams



MEAS NO.	SITE DESCRIPTION	LATITUDE (N)	LONGITUDE (W)	TIME	TEMP (°C)	pH	DO (mg/L)	SC (µs)	SALINITY (ppt)	NOTES
1	SA Bay at Falcon Point Lodge	28 22 12.3	96 42 3.6	7:54	14.0				22.60	
2	SA Bay at Mosquito Point	28 20 52.1	96 42 33.3	9:38	13.3				24.30	
3	SA Bay between Mosquito Pt. and Webb Pt. (1/4 across)	28 20 31.7	96 43 46.5	9:44	13.4				23.40	
4	SA Bay between Mosquito Pt. and Webb Pt. (midpoint)	28 20 10.2	96 44 54.6	9:51	13.5				23.20	
5	SA Bay between Mosquito Pt. and Webb Pt. (3/4 across)	28 19 42.5	96 45 52.1	9:56	13.4				23.90	
6	SA Bay at Webb Point	28 19 25.9	96 47 0.5	10:02	12.9				24.60	
7	SA Bay at Hoppers Landing	28 20 43.7	96 47 16.6	10:20	13.2				24.00	
8	SA Bay at McDowell Point	28 21 58.8	96 47 41.1	10:43	12.9				23.00	
9	Hynes Bay between McDowell & Austwell	28 22 42.1	96 49 0.6	10:50	12.8				22.10	
10	Hynes Bay at Austwell Pier	28 23 31.4	96 50 10.8	10:57	12.8				20.00	
11	SA Bay at Grassy Point (Shellfish Marker No. 2)	28 24 1.5	96 46 45.6	11:12	13.7				20.80	
12	SA Bay at Marsh Point	28 24 55.1	96 45 47.5	11:54	13.0				7.10	
13	Guadalupe Bay at Pipe No. 1	28 25 35.9	96 45 29.7	11:58	13.4				15.10	
14	Guadalupe Bay at Redfish Bayou	28 25 45.7	96 46 14.4	12:05	13.0				4.90	
15	Guadalupe Bay at Pipe No. 2	28 26 14.0	96 46 8.8	12:29	13.5				8.20	
16	Guadalupe Bay at South Fork	28 26 52.7	96 47 6.8	12:34	14.2				0.50	
17	Guadalupe Bay at Mission Lake Sonde	28 27 36.6	96 47 51.5	13:14	13.9				2.80	
18	Guadalupe Bay at Mission Lake Mouth	28 27 54.3	96 47 48.8	13:21	13.6				2.20	
19	Guadalupe Bay at Hurricane Pass	28 27 13.4	96 46 54.0	13:26	14.2				17.40	
20	Barge Canal above Hurricane Pass	28 27 28.0	96 47 4.2	13:30	14.6				14.20	
21	SA Bay at Seadrift	28 24 23.6	96 42 46.2	13:44	15.0				19.40	



**SALINITY MEASUREMENT DATA**  
SAN ANTONIO BAY

DATE:	1/17/2014
FIELD CREW:	DA, CH
AVG. DAILY FLOW AT USGS TIVOLI SH 35:	654 CFS