

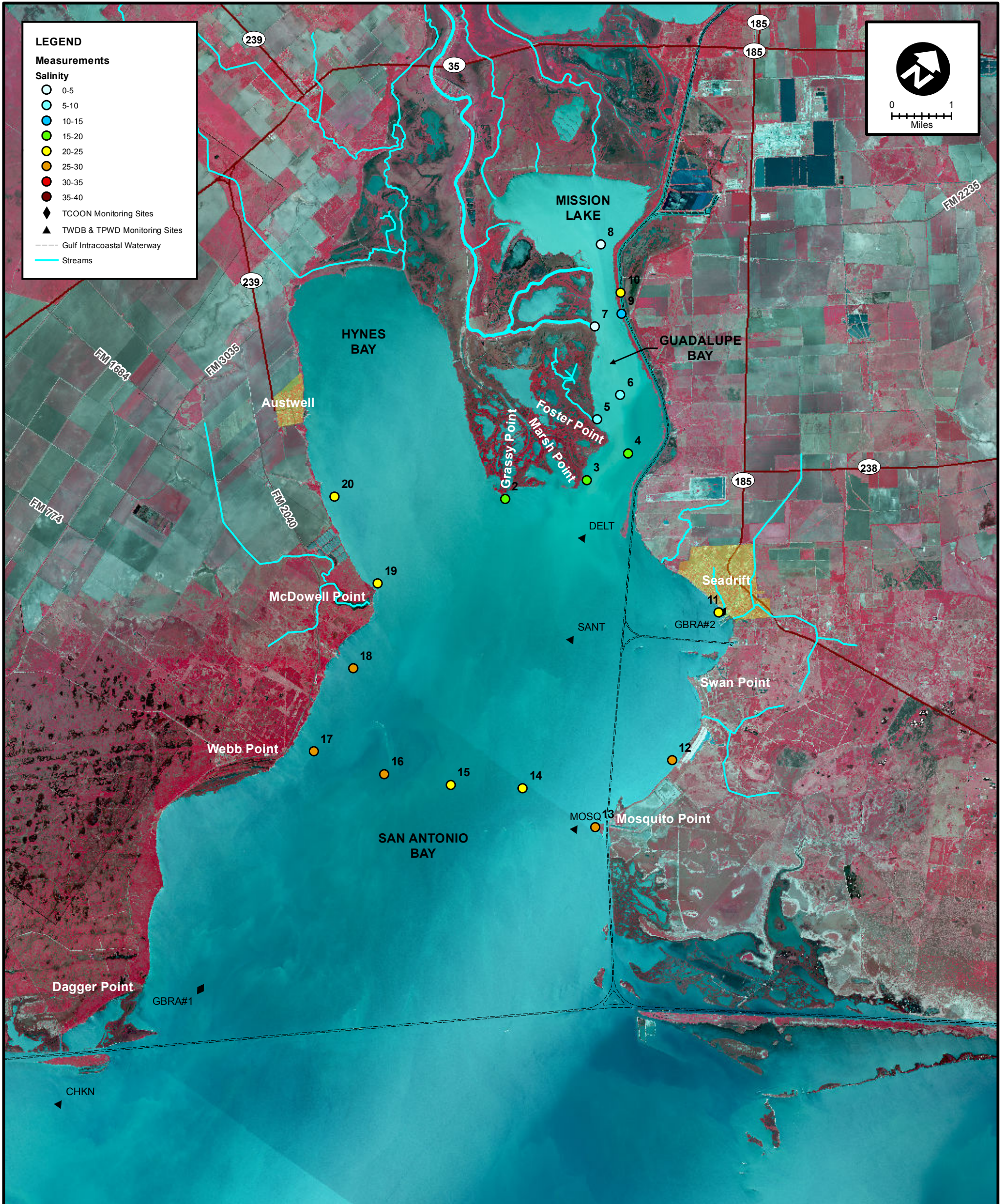
LEGEND

Measurements

Salinity

- 0-5
- 5-10
- 10-15
- 15-20
- 20-25
- 25-30
- 30-35
- 35-40

- ◆ TCOON Monitoring Sites
- ▲ TWDB & TPWD Monitoring Sites
- Gulf Intracoastal Waterway
- Streams



MEAS NO.	SITE DESCRIPTION	LATITUDE (N)	LONGITUDE (W)	TIME	TEMP (°C)	pH	DO (mg/L)	SC (µs)	SALINITY (ppt)	NOTES
1	Hynes Bay at Austwell Pier	28 33 31.3	96 50 10.9	8:26	24.2				21.90	
2	SA Bay at Grassy Point	28 24 2.1	96 46 45.4	8:39	24.3				19.70	
3	Foster Point	28 24 55.9	96 45 48.7	8:45	24.1				17.20	
4	Guadalupe Bay at Pipe No. 1	28 25 35.6	96 45 29.3	8:50	24.1				17.40	
5	Guadalupe Bay at Redfish Bayou	28 25 45.3	96 46 13.8	8:54	23.7				9.40	
6	Guadalupe Bay at Pipe No. 2	28 26 14.6	96 46 8.1	8:59	24.2				7.00	
7	Guadalupe Bay at South Fork	28 26 52.0	96 47 7.0	9:05	24.2				4.50	
8	Guadalupe Bay at Mission Lake Mouth	28 27 54.9	96 47 47.9	9:10	24.4				4.00	
9	Guadalupe Bay at Hurricane Pass	28 27 14.5	96 46 52.4	9:16	24.7				11.70	
10	Barge Canal above Hurricane Pass	28 27 29.6	96 47 4.7	9:19	24.4				24.40	
11	SA Bay at Seadrift	28 24 23.9	96 42 46.3	9:35	24.6				24.20	
12	SA Bay at Falcon Point Lodge	28 22 13.2	96 42 2.7	9:43	24.5				26.90	
13	SA Bay at Mosquito Point	28 20 46.7	96 42 29.2	9:48	24.3				28.30	
14	SA Bay Mosquito Point to Webb Point (1/4 across)	28 20 39.4	96 43 50.5	9:54	24.4				24.90	
15	SA Bay Mosquito Point to Webb Point (midpoint)	28 20 6.7	96 44 51.8	10:00	24.6				24.60	
16	SA Bay Mosquito Point to Webb Point (3/4 across)	28 19 41.9	96 45 52.5	10:05	24.6				25.20	
17	SA Bay at Webb Point	28 19 23.9	96 47 3.4	10:11	24.6				26.90	
18	SA Bay at Hoppers Landing	28 20 43.8	96 47 16.8	10:18	25.0				27.60	
19	SA Bay at McDowell Point	28 21 57.8	96 47 43.7	10:32	24.9				23.20	
20	Hynes Bay between McDowell Point & Austwell Pier	28 22 40.1	96 49 7.5	10:39	24.9				21.90	



SALINITY MEASUREMENT DATA
SAN ANTONIO BAY

DATE:	4/25/2014
FIELD CREW:	DA, LS
AVG. DAILY FLOW AT USGS TIVOLI GAUGE:	494 CFS