

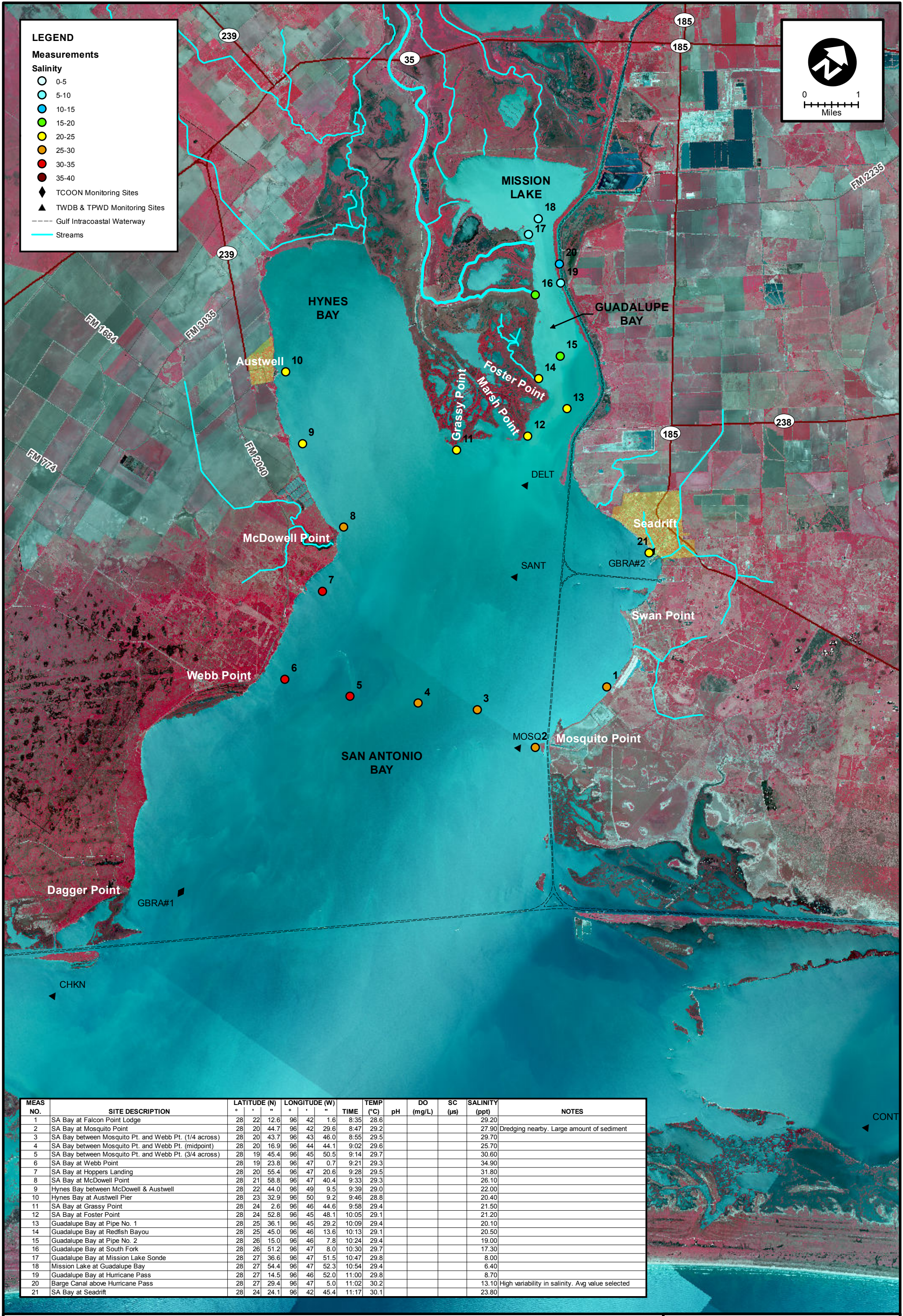
**LEGEND**

**Measurements**

**Salinity**

- 0-5
- 5-10
- 10-15
- 15-20
- 20-25
- 25-30
- 30-35
- 35-40

- ◆ TCOON Monitoring Sites
- ▲ TWDB & TPWD Monitoring Sites
- Gulf Intracoastal Waterway
- Streams



MEAS NO.	SITE DESCRIPTION	LATITUDE (N)	LONGITUDE (W)	TIME	TEMP (°C)	pH	DO (mg/L)	SC (µs)	SALINITY (ppt)	NOTES
1	SA Bay at Falcon Point Lodge	28 22 12.6	96 42 1.6	8:35	28.6				29.20	
2	SA Bay at Mosquito Point	28 20 44.7	96 42 29.6	8:47	29.2				27.90	Dredging nearby. Large amount of sediment
3	SA Bay between Mosquito Pt. and Webb Pt. (1/4 across)	28 20 43.7	96 43 46.0	8:55	29.5				29.70	
4	SA Bay between Mosquito Pt. and Webb Pt. (midpoint)	28 20 16.9	96 44 44.1	9:02	29.6				25.70	
5	SA Bay between Mosquito Pt. and Webb Pt. (3/4 across)	28 19 45.4	96 45 50.5	9:14	29.7				30.60	
6	SA Bay at Webb Point	28 19 23.8	96 47 0.7	9:21	29.3				34.90	
7	SA Bay at Hoppers Landing	28 20 55.4	96 47 20.6	9:28	29.5				31.80	
8	SA Bay at McDowell Point	28 21 58.8	96 47 40.4	9:33	29.3				26.10	
9	Hynes Bay between McDowell & Austwell	28 22 44.0	96 49 9.5	9:39	29.0				22.00	
10	Hynes Bay at Austwell Pier	28 23 32.9	96 50 9.2	9:46	28.8				20.40	
11	SA Bay at Grassy Point	28 24 2.6	96 46 44.6	9:58	29.4				21.50	
12	SA Bay at Foster Point	28 24 52.8	96 45 48.1	10:05	29.1				21.20	
13	Guadalupe Bay at Pipe No. 1	28 25 36.1	96 45 29.2	10:09	29.4				20.10	
14	Guadalupe Bay at Redfish Bayou	28 25 45.0	96 46 13.6	10:13	29.1				20.50	
15	Guadalupe Bay at Pipe No. 2	28 26 15.0	96 46 7.8	10:24	29.4				19.00	
16	Guadalupe Bay at South Fork	28 26 51.2	96 47 8.0	10:30	29.7				17.30	
17	Guadalupe Bay at Mission Lake Sonde	28 27 36.6	96 47 51.5	10:47	29.8				8.00	
18	Mission Lake at Guadalupe Bay	28 27 54.4	96 47 52.3	10:54	29.4				6.40	
19	Guadalupe Bay at Hurricane Pass	28 27 14.5	96 46 52.0	11:00	29.8				8.70	
20	Barge Canal above Hurricane Pass	28 27 29.4	96 47 5.0	11:02	30.2				13.10	High variability in salinity. Avg value selected
21	SA Bay at Seadrift	28 24 24.1	96 42 45.4	11:17	30.1				23.80	



**SALINITY MEASUREMENT DATA**  
SAN ANTONIO BAY

DATE:	8/22/2014
FIELD CREW:	DA, CH
AVG. DAILY FLOW AT USGS TIVOLI GAUGE:	218 CFS