

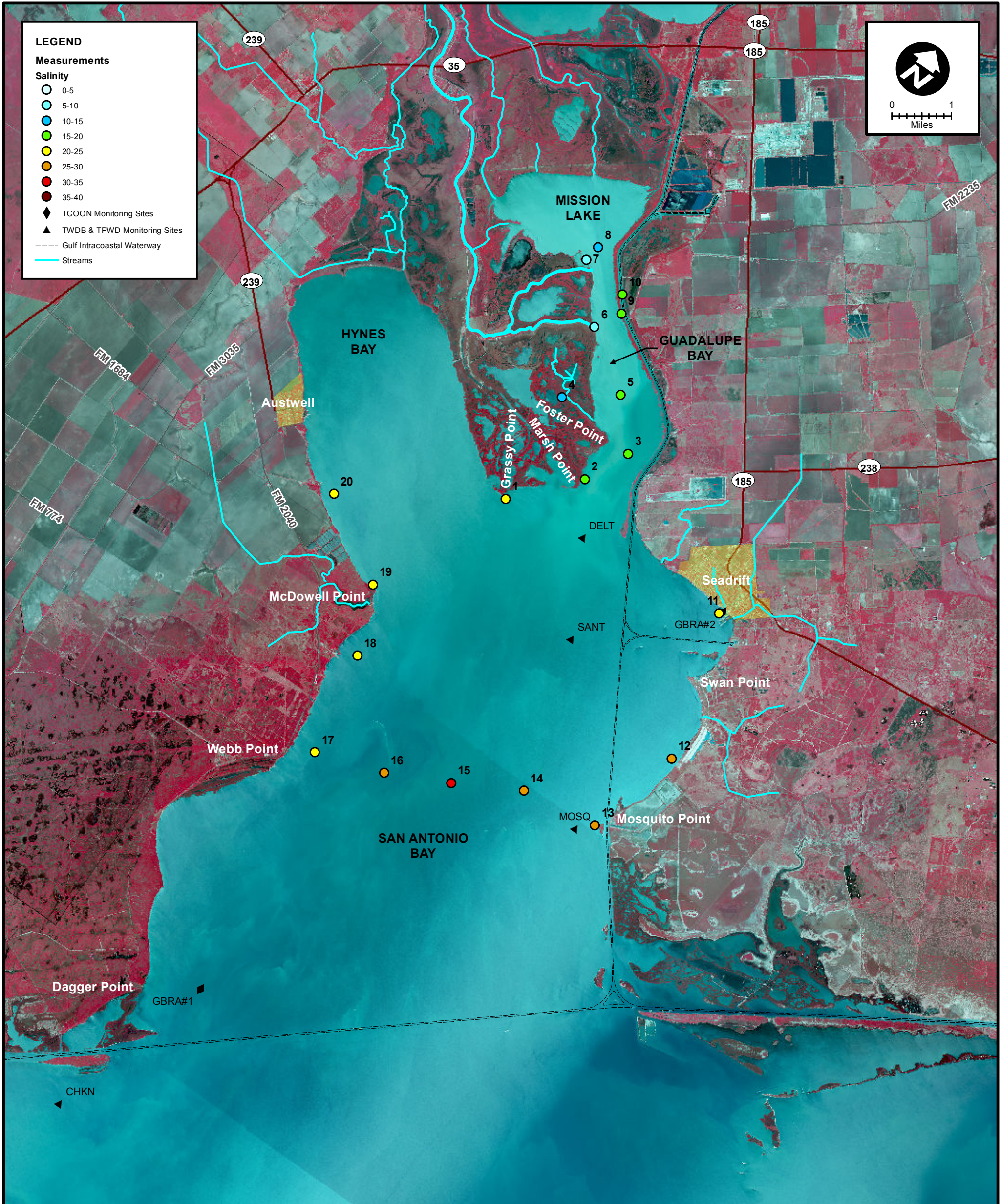
LEGEND

Measurements

Salinity

- 0-5
- 5-10
- 10-15
- 15-20
- 20-25
- 25-30
- 30-35
- 35-40

- ◆ TCOON Monitoring Sites
- ▲ TWDB & TPWD Monitoring Sites
- Gulf Intracoastal Waterway
- Streams



MEAS NO.	SITE DESCRIPTION	LATITUDE (N)	LONGITUDE (W)	TIME	TEMP (°C)	pH	DO (mg/L)	SC (µs)	SALINITY (ppt)	NOTES
1	SA Bay at Grassy Point	28 24 2.2	96 46 45.0	8:48	25.0				22.30	
2	SA Bay at Marsh Point	28 24 55.7	96 45 50.6	8:59	25.0				17.00	
3	Guadalupe Bay at Pipe No. 1	28 25 35.5	96 45 28.9	9:02	25.0				17.70	
4	Guadalupe Bay at Redfish Bayou	28 25 44.1	96 46 55.1	9:10	25.0				13.20	
5	Guadalupe Bay at Pipe No. 2	28 26 14.8	96 46 8.0	9:23	25.2				16.00	
6	Guadalupe Bay at South Fork	28 26 51.4	96 47 7.2	9:38	25.2				9.40	
7	Guadalupe Bay Mission Lake Sonde	28 27 36.5	96 47 51.4	9:48	25.0				8.90	
8	Guadalupe Bay at Mission Lake	28 27 51.5	96 47 48.4	10:08	25.4				12.10	
9	Guadalupe Bay at Hurricane Pass	28 27 14.4	96 46 52.4	10:13	25.9				16.60	
10	Barge Canal above Hurricane Pass	28 27 28.9	96 47 2.1	10:16	26.2				18.00	
11	SA Bay at Seadrift	28 24 23.6	96 42 45.5	10:39	26.1				24.50	
12	SA Bay at Falcon Point Lodge	28 22 14.1	96 42 3.8	10:43	25.6				26.70	
13	SA Bay at Mosquito Point	28 20 47.9	96 42 30.3	11:28	26.0				28.90	
14	SA Bay Mosquito Point to Webb Point (1/4 across)	28 20 38.2	96 43 48.1	11:33	25.7				30.00	
15	SA Bay Mosquito Point to Webb Point (1/2 across)	28 20 8.3	96 44 52.3	11:39	25.8				30.40	
16	SA Bay Mosquito Point to Webb Point (3/4 across)	28 19 42.7	96 45 53.2	11:44	26.0				29.50	
17	SA Bay at Webb Point	28 19 23.8	96 47 1.9	11:49	25.9				22.40	
18	SA Bay at Hoppers Landing	28 20 55.1	96 47 20.5	12:08	26.2				21.90	
19	SA Bay at McDowell Point	28 21 54.7	96 47 47.0	12:40					21.00	Measured w/ refractometer
20	Hynes Bay between McDowell & Austwell	28 22 41.6	96 49 9.6	12:48					21.00	Measured w/ refractometer



SALINITY MEASUREMENT DATA
SAN ANTONIO BAY

DATE:	9/29/2014
FIELD CREW:	DA, CH
AVG. DAILY FLOW AT USGS TIVOLI GAUGE:	375 CFS