

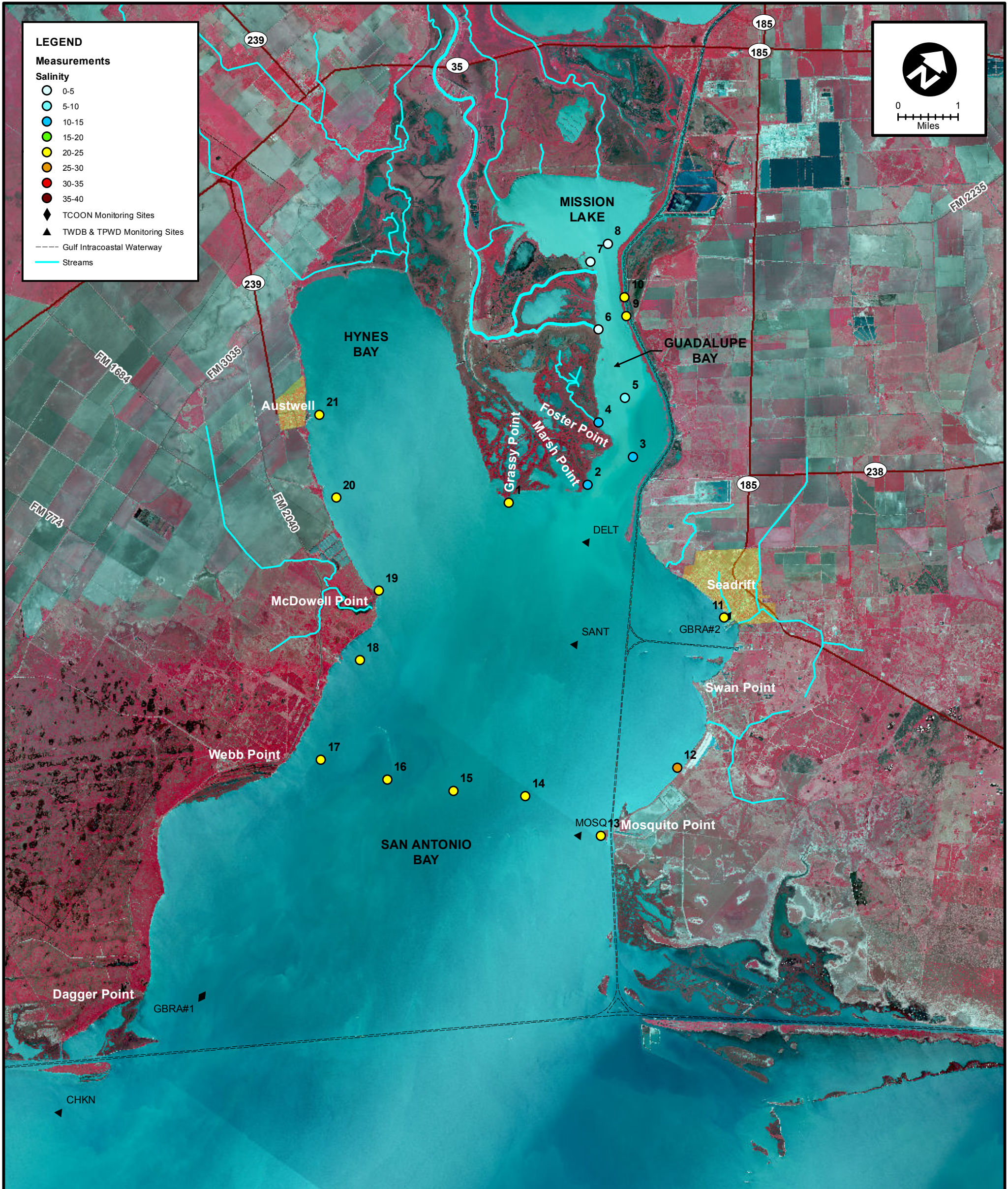
LEGEND

Measurements

Salinity

- 0-5
- 5-10
- 10-15
- 15-20
- 20-25
- 25-30
- 30-35
- 35-40

- ◆ TCOON Monitoring Sites
- ▲ TWDB & TPWD Monitoring Sites
- Gulf Intracoastal Waterway
- Streams



MEAS NO.	SITE DESCRIPTION	LATITUDE (N)	LONGITUDE (W)	TIME	TEMP (°C)	pH	DO (mg/L)	SC (µs)	SALINITY (PSU)	NOTES
1	SA Bay at Grassy Point Shellfish Marker No. 2	28 24 2.0	96 46 45.3	9:29	11.6	8.0	8.2	35,290	22.20	
2	SA Bay at Marsh Point	28 24 53.7	96 45 50.5	9:38	10.3	7.8	9.8	24,230	14.70	
3	Guadalupe Bay at Pipe No. 1	28 25 35.8	96 45 29.0	9:45	10.3	7.9	9.7	24,170	14.65	
4	Guadalupe Bay at Redfish Bayou	28 25 44.1	96 46 16.2	9:49	9.7	8.0	10.9	17,480	10.29	
5	Guadalupe Bay at Pipe No. 2	28 26 14.9	96 46 7.8	10:03	10.0	8.2	10.9	16,610	9.74	
6	Guadalupe Bay at South Fork	28 26 51.3	96 47 7.4	10:08	12.3	7.9	9.3	4,119	2.12	
7	Mission Lake Sonde	28 27 36.6	96 47 51.4	10:42	11.0	8.2	10.7	1,690	0.86	
8	Mission Lake	28 27 58.2	96 47 46.9	10:48	9.6	8.2	11.4	7,601	4.22	
9	Hurricane Pass	28 27 14.5	96 46 51.9	10:55	12.5	7.9	9.0	35,470	22.33	
10	Victoria Barge Canal	28 27 27.6	96 47 3.7	10:58	13.4	7.9	9.3	32,810	20.39	
11	SA Bay at Seadrift	28 24 23.8	96 42 45.5	11:14	12.2	8.1	9.4	38,910	24.74	
12	Falcon Point Lodge	28 22 12.2	96 42 1.3	11:38	11.2	7.8	9.8	39,900	25.40	
13	Mosquito Point	28 20 45.4	96 42 26.6	11:46	11.5	7.8	9.5	35,650	22.45	
14	Mosquito Point to Webb Point (1/4 across)	28 20 37.8	96 43 50.2	11:53	11.9	8.1	9.5	34,400	21.61	
15	Mosquito Point to Webb Point (1/2 across)	28 20 6.4	96 44 52.0	11:59	12.1	8.1	9.6	34,820	21.91	
16	Mosquito Point to Webb Point (3/4 across)	28 19 42.4	96 45 52.7	12:03	12.0	8.2	9.8	35,520	22.37	
17	Webb Point	28 19 24.4	96 46 57.8	12:08	12.1	8.1	9.6	36,030	22.73	
18	Hoppers Landing	28 20 55.5	96 47 20.7	12:14	11.4	8.1	9.6	35,380	22.27	
19	McDowell Point	28 21 55.1	96 47 43.4	12:19	11.1	8.1	10.2	33,770	21.15	
20	McDowell Point to Austwell Midpoint	28 22 41.8	96 49 9.6	12:25	12.1	8.2	9.5	33,300	20.87	
21	Hynes Bay at Austwell Pier	28 23 33.7	96 50 9.0	12:30	11.0	8.2	10.1	32,980	20.61	



SALINITY MEASUREMENT DATA
SAN ANTONIO BAY

DATE: 12/29/2014

FIELD CREW: DA, CH

AVG. DAILY FLOW AT USGS TIVOLI GAUGE: 607 CFS