

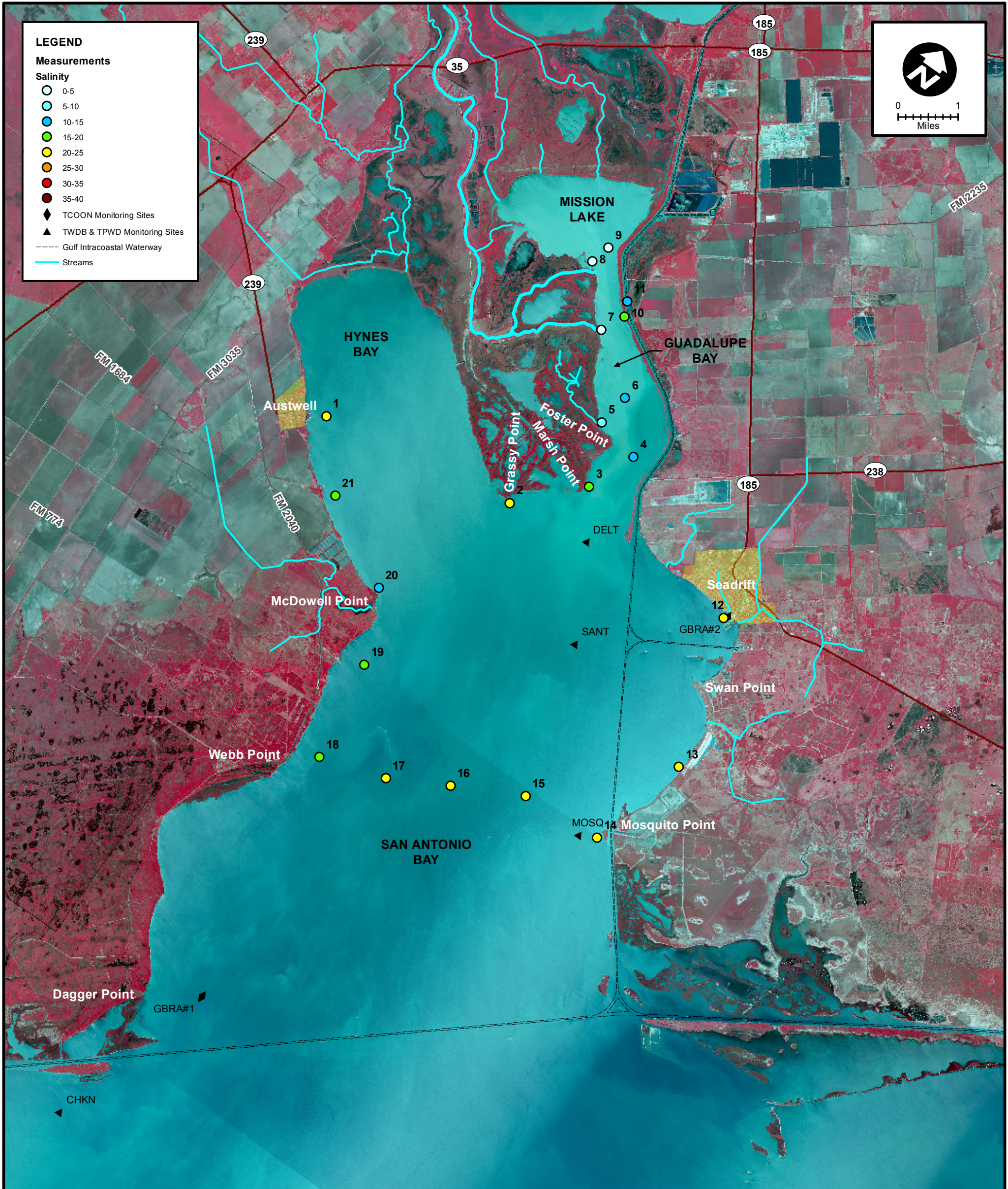
**LEGEND**

**Measurements**

**Salinity**

- 0-5
- 5-10
- 10-15
- 15-20
- 20-25
- 25-30
- 30-35
- 35-40

- ◆ TCOON Monitoring Sites
- ▲ TWDB & TPWD Monitoring Sites
- Gulf Intracoastal Waterway
- Streams



MEAS NO.	SITE DESCRIPTION	LATITUDE (N)	LONGITUDE (W)	TIME	TEMP (°C)	pH	DO (mg/L)	SC (µs)	SALINITY (PSU)	NOTES
1	Hynes Bay at Austwell Ramp	28 23 35.9	96 50 2.5	9:34	13.7				24.70	
2	Grassy Point	28 24 2.4	96 46 44.4	9:44	13.5				24.80	
3	Marsh Point	28 24 53.0	96 45 48.4	9:50	13.8				15.70	
4	Guadalupe Pipe #1	28 25 36.0	96 45 28.3	9:57	13.9				12.40	
5	Redfish Bayou	28 25 45.7	96 46 13.4	10:03	13.8				7.50	
6	Guadalupe Pipe #2	28 26 14.8	96 46 7.7	10:07	13.9				13.20	
7	Guadalupe Bay at South Fork	28 26 52.5	96 47 5.0	10:14	14.5				1.10	
8	Guadalupe Bay at Mission Lake Sonde	28 27 37.7	96 47 49.8	10:26	14.4				0.60	
9	Guadalupe Bay at Mission Lake	28 27 55.5	96 47 44.1	10:30	14.0				0.80	
10	Hurricane Pass	28 27 13.6	96 46 53.1	10:36	13.8				16.10	
11	Barge Canal above Hurricane Pass	28 27 25.8	96 46 59.1	10:38	14.1				13.00	
12	SA Bay at Seadrift	28 24 23.3	96 42 45.6	10:50	13.9				22.60	
13	SA Bay at Falcon Point	28 22 13.5	96 42 0.3	11:12	13.8				22.50	
14	Mosquito Point	28 20 42.4	96 42 28.4	11:19	13.7				24.70	
15	Mosquito Point to Webb Point (1/4 across)	28 20 37.9	96 43 50.0	11:26	13.3				22.00	
16	Mosquito Point to Webb Point (midpoint)	28 20 8.9	96 44 57.3	11:33	13.5				20.10	
17	Mosquito Point to Webb Point (3/4 across)	28 19 42.5	96 45 54.4	11:39	13.3				21.60	
18	Webb Point	28 19 25.6	96 47 0.4	11:45	14.2				18.10	
19	Hoppers Landing	28 20 54.5	96 47 14.6	11:52	14.4				15.30	
20	McDowell Point	28 21 57.0	96 47 45.0	11:56	14.5				15.00	
21	Between McDowell Point & Austwell	28 22 42.6	96 49 11.4	12:01	14.4				15.30	



**SALINITY MEASUREMENT DATA**  
SAN ANTONIO BAY

DATE: 03/12/2015

FIELD CREW: DA

AVG. DAILY FLOW AT USGS TIVOLI GAUGE: ---