

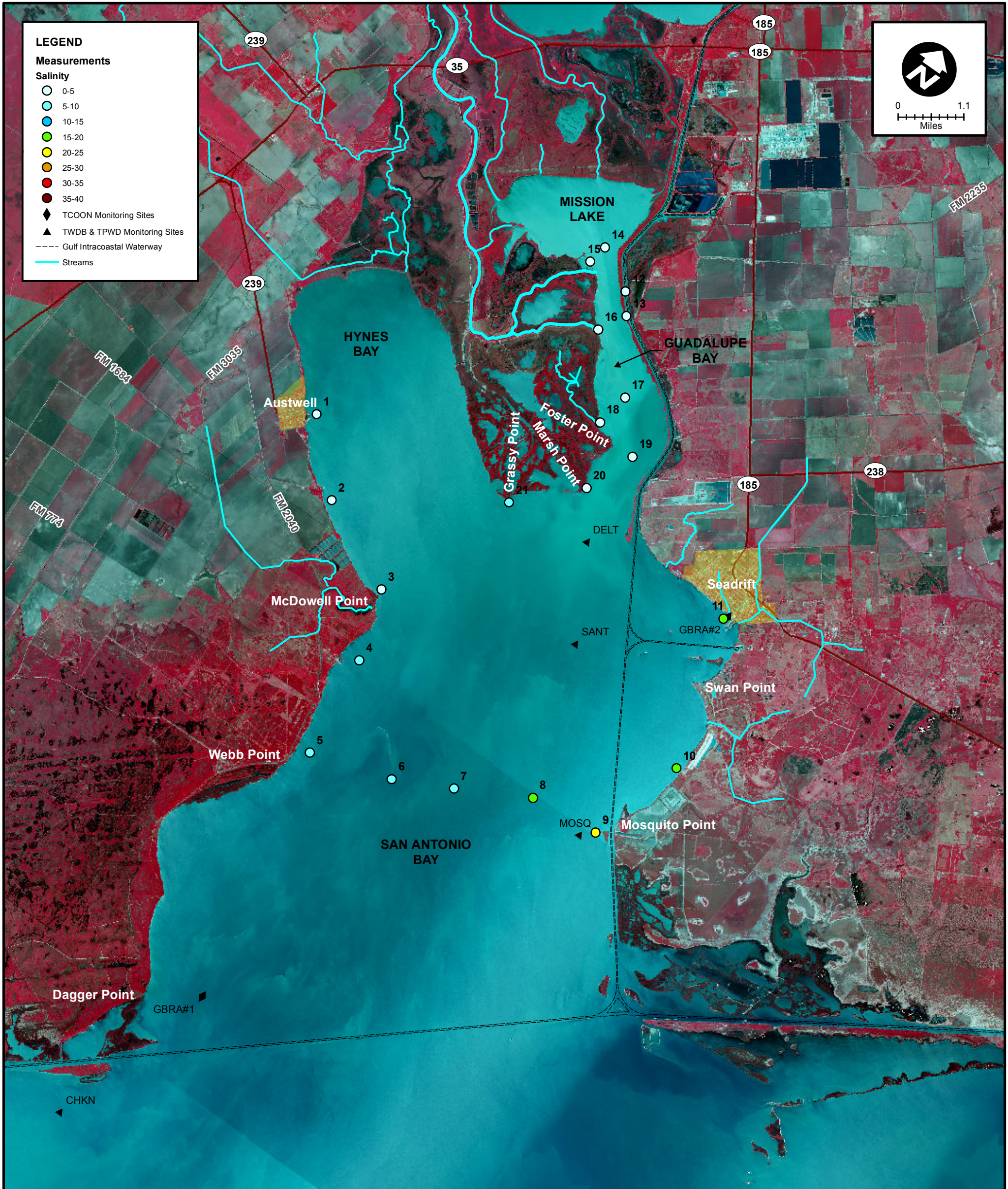
LEGEND

Measurements

Salinity

- 0-5
- 5-10
- 10-15
- 15-20
- 20-25
- 25-30
- 30-35
- 35-40

- ◆ TCOON Monitoring Sites
- ▲ TWDB & TPWD Monitoring Sites
- Gulf Intracoastal Waterway
- Streams



MEAS NO.	SITE DESCRIPTION	LATITUDE (N)	LONGITUDE (W)	TIME	TEMP (°C)	pH	DO (mg/L)	SC (µs)	SALINITY (PSU)	NOTES
1	Austwell Pier	28 23 32.7	96 50 11.7	9:15	17.4				3.90	
2	Hynes Bay between Austwell & McDowell	28 22 37.6	96 49 11.9	9:20	17.4				4.80	
3	McDowell Pt	28 21 57.4	96 47 42.1	9:26	16.7				3.90	
4	Hoppers Landing	28 20 55.1	96 47 21.0	9:31	17.6				6.00	
5	Webb Point	28 19 24.1	96 47 10.9	9:38	17.6				6.00	
6	Mosquito Point to Webb Point (3/4 across)	28 19 44.8	96 45 49.1	9:45	17.0				9.00	
7	Mosquito Point to Webb Point (midpoint)	28 20 8.3	96 44 53.0	9:56	17.0				9.50	
8	Mosquito Point to Webb Point (1/4 across)	28 20 40.1	96 43 43.2	10:02	17.4				15.70	
9	Mosquito Point	28 20 45.5	96 42 32.5	10:08	17.8				24.10	
10	Falcon Point	28 22 11.4	96 42 1.7	10:13	18.8				19.20	
11	Seadrift	28 24 22.8	96 42 45.5	10:25	19.1				15.50	
12	Barge Canal	28 27 32.2	96 47 5.9	10:40	17.7				2.60	
13	Hurricane Pass	28 27 14.8	96 46 51.8	10:45	17.5				0.30	
14	Mission Lake	28 27 54.3	96 47 47.2	10:49	17.4				0.20	
15	Mission Lake Sonde	28 27 36.7	96 47 51.4	10:57	17.8				0.20	
16	South Fork	28 26 51.2	96 47 7.5	11:05	17.5				0.50	
17	Pipe #2	28 26 15.0	96 46 7.8	11:18	17.6				0.60	
18	Redfish Bayou	28 25 44.9	96 46 14.8	11:23	17.8				0.60	
19	Pipe #1	28 25 35.9	96 45 29.2	11:27	18.1				2.00	
20	Marsh Point	28 24 50.7	96 45 49.9	11:32	18.1				2.10	
21	Grassy Point	28 24 2.5	96 46 45.1	11:37	18.3				7.40	



SALINITY MEASUREMENT DATA
SAN ANTONIO BAY

DATE:	11/25/2015
FIELD CREW:	DA, CH
AVG. DAILY FLOW AT USGS TIVOLI GAUGE:	N/A